

Supporting your needs



‘One Stop Shop’ for Back Supports

Welcome to our ‘One Stop Shop’ for Wheelchair Back Supports

HIA is known as the provider of quality and relevant equipment, and has always understood the importance of postural management. We appreciate that every client is different, hence the need for equipment is not always the same from person to person. We aim to bring together products from around the world which not only promote postural support, but provide comfort to make sure that individuals get the equipment they are looking for to suit their needs.

Proper positioning and postural support are essential for the health and well-being of wheelchair users: a solid and reliable back system is the key solution for proper positioning. The back system supports the spine and helps to position the pelvis. Selecting the right back system is one of the most important decisions to be made when assessing a client. To help you find the ideal back, HIA has brought together a range of back systems to suit individual needs from paediatric sizes to adult. Taking into consideration control, function, comfort, weight, and many other factors, this catalogue offers a ‘One Stop Shop’ for anyone looking for the right back. We proudly welcome you to our Backs Catalogue.

HIA’s mission is to bring world leading products to its customers. Alongside these products, HIA aims to offer broad ranging training and education, and match this with a high level of service. This combination means that those who have a disability, are in care, or are temporarily unwell, can receive the highest quality of care materials that they deserve.

HIA has years of experience in the healthcare arena. Because of this experience we understand three key things about modern healthcare: it can take time, it can cost money, and it can be complicated. But this need not be the case. We aim to address this with our range of products that not only improve the quality of life and assist in day to day living activities of the end user, but also offer the clinician, technician, or specialist an effective, affordable, and straightforward tool to achieve results time and time again.

HIA was incorporated to provide access to world-leading products, in Australia. we provide the Shear Comfort range of wool and sheepskin products for skincare and foot protection. Alongside this range we carry products from the USA, Canada, and Europe. These products are all CE marked for sale in Europe, and registered with TGA in Australia.

Core Values

Superior Service

- ✓ Fast turnaround for orders
- ✓ Highly trained office and sales personnel
- ✓ National coverage

Understanding our Customers

Every customer has different needs, and we pride ourselves on being able to listen to those needs and support them by offering the right solution, hence our by-line ‘Supporting your needs.’

Education

We help train our customers to measure and assess their clients’ clinical needs, and therefore get the best from our products. We provide our customers with the information they need in order to make informed decisions that lead to patients getting the best level of care possible.

Integrity

We pride ourselves in providing world-leading products which are sold ethically and are of clinical value to our customers.

Contents

Seating System - Selection Guide (Synopsis)	4
Varilite	5
Varilite Icon Back Supports - Comfort at its Best	6
Varilite Icon Back Supports - Dimensions	7
Varilite Icon Back Supports - Order Codes	8
Varilite Mounting Hardware and Additional Extras	9
Varilite Talon	10-11
Tarta	12
Tarta - More than Just a Back Support	13-14
Tarta Ordering an Off-the-Shelf Back support System	15
Dynaspine - A Dynamic Back	16-18
What Should the Back of a Seating System Provide?	19

NEW

The Varilite JUNIOR Back Support

Paediatric Seating - Sized for Children

The new Varilite JUNIOR back supports are proportionally designed for a child’s body, keeping in mind that children are not small adults. Available in deep contour and active contour, the JUNIOR back supports offer moderate postural support and alignment. The Varilite JUNIOR back supports are lightweight, sleek, compact, and simple to use, for maximum support with minimal fuss.

Seating Systems - Selection Guide (Synopsis)

	Dynamic	Suitable for transportation/ Crashworthy	Chair Widths	Number of chair widths	Inside width range	Upright Mountable	Rigidiser bar mountable	Back lengths	Choice of Depths	Fixed lateral option	Swingaway lateral option									
Varilite																				
Varilite Icon Low Back	No	-	14-20"	6	11-17"	2pt	No	7-10"	No	No	No									
Varilite Icon Mid Back	No	-	12-24"	9	10-21"	2pt	No	10-16"	No	Yes	Yes									
Varilite Icon Tall Back	No	Yes	12-20"	7	10-17"	2pt	No	15-24"	No	Yes	Yes									
Varilite Icon Deep Back	No	Yes	14-20"	6	11-17"	2pt	No	17-24"	No	No	No									
Varilite Junior Mid Back	No	-	10"	1	9"	2pt	No	9"	No	Yes	Yes									
Varilite Junior Deep Back	No	Yes	10"	1	10"	2pt	No	9"	No	Yes	Yes									
Varilite Talon Back	No	-	14-20"	6	12-17"	No	Yes	6-9"	No	No	No									
Tarta																				
4 Vertebrae																				
5 Vertebrae																				
6 Vertebrae																				
Dynaspine																				
Dynaspine	Yes	-	16-19"	3	16"	2pt	No	16"	No	No	No									
Inches to Centimetres conversion																				
In	1	2	3	4	5	6	7	8	9	10	11	12	13	14	15	16	17	18	19	20
cm	2.5	5.0	7.6	10.0	12.5	15.0	17.5	20.0	22.5	25.0	27.5	30.0	32.5	35.0	37.5	40.0	42.5	46.0	47.5	50.0



NEW

Varilite Junior Back Supports Now Available.

Comfortable and ultralightweight in 10" Mid and Deep contours. Proportionally designed for a child's body, Varilite Junior Back Supports are compact, and simple to use, for maximum support with minimal fuss.

Icon and Talon Back Supports



Varilite Icon Back Support Systems - Comfort at its best

A comfortable back support is normally a user’s first priority, and the Icon back support system is designed to contribute to the most comfortable seating along with proper positioning and postural support. The rollover cushion and cover, air and dual stiffness foam cushioning, and breathable fabric are the essential elements that make this possible. The Icon cushions are made of Varilite Air-Foam Flotation technology which adds to the lightweight nature of these back supports.



Icon Low Back Support

Pelvic and Lumbar Support for a user with good trunk control

The Icon Low Back Support is an ideal lightweight solution for users needing lower trunk support and full adjustment. The upper body is unimpeded, which allows full range of motion of the upper body and trunk. The shell curves around the sides of the body for mild lateral support, while the accompanying enhanced rollover cushion protects the user and provides maximum comfort. (The Icon Low Back Support is unsuitable for users who require an additional head support or anterior thoracic supports).



Icon Mid Back Support

Mid-Trunk Support for a large range of body types

The Icon Mid Back Support supports the user just below the scapulae so the back does not interfere with arm movement during propelling or other activities. The shell provides mid-lateral support. Secondary supports attach easily if more aggressive lateral support is required. The Icon features an enhanced rollover cushion to protect the user and give added support. (The Icon Mid Back Support is unsuitable for users who require an additional head support or shoulder harness).



Icon Tall Back Support

Full Trunk Coverage for moderate to maximum support and comfort

The Icon Tall Back Support supports the entire back to the top of the shoulders. This is ideal for users with decreased trunk control, those who need a back support for use during transportation, or where a head support needs to be added. The curved shell provides moderate back support. The Icon Tall provides full trunk coverage which makes it a comfortable back to lean on. Individual lateral supports can be added for increased thoracic support if required. The Icon Tall Back Support has passed transportation crashworthiness testing.



Icon Deep Back Support

Full Trunk Coverage and Deep Lateral Support

The Icon Deep Back Support supports a user’s back to the top of the shoulders, along with extra lateral support and comfort to the thoracic trunk. The deep contour of the back provides more lateral support for users with poor trunk control. The Icon Deep includes a closed-cell foam PSIS (Posterior Superior Iliac Spine) block and supplemental lateral pads that attach to the shell with adhesive hook and loop. The PSIS block provides support to the pelvis at the PSIS level, promoting neutral pelvic tilt and spinal extension. The supplemental lateral pads help customise the fit. The Icon Deep has passed transportation crashworthiness tests.

Varilite Icon Back Support Systems - Dimensions

Guide to help selection of the appropriate Icon Back Support															
Chair width	Back Length (A)		Bottom of back to beginning of vertical slot (B)		Bottom of back to top of vertical slot (C)		Range of Icon hardware adjustment in vertical slot (D)		Outside width of shell (E)		Width of support (F)		Length of fixed Lateral Support (G)		Measurement diagram
Icon Low Back Support															
	cm	in	cm	in	cm	in	cm	in	cm	in	cm	in	cm	in	
14"	18	7.1	4	1.6	14	5.5	1	0.4	29	11.4	27	10.6	-	-	
15"	20	7.9	4	1.6	14	5.5	1	0.4	31	12.2	29	11.4	-	-	
16"	21	8.3	4	1.6	14	5.5	1	0.4	34	13.4	32	12.6	-	-	
17"	22	8.7	4	1.6	14	5.5	1	0.4	37	14.6	35	13.5	-	-	
18"	23	9.1	4	1.6	15	5.9	2	0.8	39	15.4	37	14.6	-	-	
20"	24	9.4	4	1.6	15	5.9	2	0.8	44	17.3	42	16.5	-	-	
Icon Mid Back Support (Including Junior)															
10"	23.5	9.3	2.5	1	17.8	7	12.5	4.9	21.8	8.6	19	7.6	-	-	
12"	25	9.8	3	1.2	13	5.1	1	0.4	24	9.4	22	8.7	-	-	
14"	28	11	4	1.6	17	6.7	4	1.6	29	11.4	27	10.6	-	-	
15"	31	12.2	4	1.6	18	7.1	5	2	31	12.2	29	11.4	-	-	
16"	32	12.6	4	1.6	19	7.5	6	2.4	34	13.4	32	12.6	-	-	
17"	34	13.4	4	1.6	20	7.9	8	3.1	37	14.6	35	13.5	-	-	
18"	36	14.2	4	1.6	22	8.7	9	3.5	39	15.4	37	14.6	-	-	
20"	40	15.7	4	1.6	22	8.7	9	3.5	44	17.3	42	16.5	-	-	
22"	40	15.7	4	1.6	22	8.7	9	3.5	49	19.3	47	18.5	-	-	
24"	40	15.7	4	1.6	22	8.7	9	3.5	54	21.3	52	20.5	-	-	
Icon Tall Back Support															
12"	37	14.6	5	2	23	9.1	9	3.5	24	9.4	22	8.7	-	-	
14"	43	16.9	6	2.4	24	9.4	9	3.5	29	11.4	29	11.4	-	-	
15"	46	18.1	6	2.4	27	10.6	11	4.3	31	12.2	31	12.2	-	-	
16"	49	19.3	8	3.1	28	11	11	4.3	34	13.4	34	13.4	-	-	
17"	52	20.5	8	3.1	28	11	11	4.3	37	14.6	37	14.6	-	-	
18"	55	21.7	9	3.5	29	11.4	11	4.3	39	15.4	39	15.4	-	-	
20"	60	23.6	9	3.5	29	11.4	11	4.3	44	17.3	44	17.3	-	-	
Icon Deep Back Support (Including Junior)															
10"	23.5	9.3	2.5	1	17.8	7	12.5	4.9	25.1	9.9	22.6	8.9	14.5	5.7	
14"	43	16.9	6	2.4	24	9.4	9	3.5	32	12.6	30	11.8	29	11.4	
15"	46	18.1	6	2.4	27	10.6	11	4.3	36	14.2	34	13.4	32	12.6	
16"	49	19.3	8	3.1	28	11	11	4.3	39	15.4	37	14.6	35	13.8	
17"	52	20.5	8	3.1	28	11	11	4.3	41	16.1	39	15.4	36	14.2	
18"	55	21.7	9	3.5	29	11.4	11	4.3	44	17.3	42	16.5	38	15	
20"	60	23.6	9	3.5	29	11.4	11	4.3	50	19.7	48	18.9	41	16.1	

Varilite Icon Back Support Systems - Order Codes

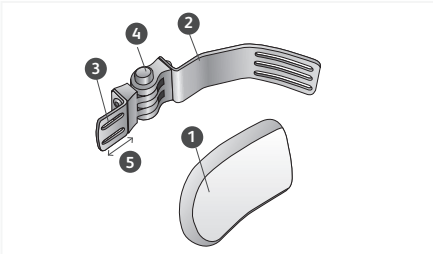
1. Choose your Varilite™ Icon Back Support

Varilite Icon Back Support Systems - Order Codes										
Back Type	Width*									
	10" (25cm)	12" (30cm)	14" (35cm)	15" (38cm)	16" (40cm)	17" (43cm)	18" (45cm)	20" (50cm)	22" (55cm)	24" (61cm)
Low Back	-	-	32141	32151	32161	32171	32181	32201	-	-
Mid Back	12101	12121	12141	12151	12161	12171	12181	12201	12221	12241
Tall Back	-	22121	22141	22151	22161	22171	22181	22201	-	-
Deep Back	42101	-	42141	42151	42161	42171	42181	42201	-	-

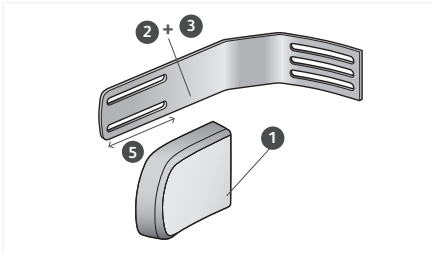
* Mounting hardware adjustability allows for +/- 1" (2.5cm) variance in wheelchair size

2. Choose either a PAL Swing-Away (2a) or a Fixed Lateral Support (2b)

2a) Positive Action Lateral, PAL™ Swing-aways are designed to use with the Icon Mid and Icon Tall backs, providing lateral positioning and support wherever needed. A PAL lateral system is made up of a lateral pad (1), shell bracket (2), pad bracket (3), and a push button hinge (4).



Pal swing-away lateral supports



Fixed lateral support

- 1. Pads:** Pads are available in choices of contoured or linear styles in three sizes. They are made of closed-cell foam with a steel insert that allows horizontal pad adjustment. The pad foam is protected with a removable, machine washable cover.
 - 2. Shell Bracket:** The steel Shell Bracket is contoured to mount on the inside of a Varilite Icon Mid or Tall Back shell. The low profile bracket is less than 1/8" thick.
 - 3. Pad Bracket:** Constructed of steel for strength, the steel pad bracket attaches securely to the pad. Easy adjustment allows +/- 10 degree of vertical pad rotation. Pad brackets are available in short, long, and offset configurations.
 - 4. Push Button Hinge:** An easily activated push button unlocks the PAL swing away hinge mechanism. Positive locking action indicates when the hinge is securely locked. The hinge can be angle adjusted for up to 225 degrees of swing.
 - 5. Anterior-Posterior Adjustability**
- 2b) Fixed Lateral Supports:** Fixed lateral supports are available for situations when a swing-away lateral is not required. Fixed lateral supports consist of a combined shell and pad bracket, and require a pad.

2a. Select Bracket (PAL Swing-away lateral for Icon Backs)						
Pad Bracket (3)	Anterior Pad Adj.	10" (25cm)	12" (30cm)	14-15" (35-38cm)	16-17" (40-43cm)	18" (45cm)
Short	1" (2.5cm)	-	89050	89010	89020	89030
Short w/2cm offset	1" (2.5cm)	07218	89250	89210	89220	89230
Long	2.2" (5.7cm)	-	89150	89110	89120	89130

Note: All items supplied singly, so if a pair is required please order two.

OR

2b. Select Fixed Lateral Support					
Pad Bracket (3)	Anterior Pad Adj.	14-15" (35-38cm)	16-17" (40-43cm)	18" (45cm)	20-24" (50-60cm)
Long	2.2" (5.7cm)	88010	88020	88030	88040

3. Select Type and Size of Pad				
Pad	2x2" (5x5cm)	3x4" (7.5x10cm)	4x5" (10x12.5cm)	5x6" (12.5x15cm)
Curved	07219	04317	04319	04321
Linear	-	04307	04309	04311

Varilite Mounting Hardware and Accessories

Ease of installation and removal improved further with a new design of mounting hardware

Icon back supports install on a wheelchair quickly and easily. Only two parts need to be attached to the wheelchair - all other hardware components are pre-installed. The back supports need just a single tool for installation as all of the adjustment screws are the same size. Icon hardware is symmetrical so there are no right-handed or left-handed components, making it simple to mount. The hardware provides a wide range of seat depth adjustment, without any need for any special extra-length parts. Posterior seat depth can be increased or anterior seat depth can be decreased easily by just reversing the hardware.

NEW

Varilock Mounting Hardware (07483)



Varilock is the new and improved mounting hardware for the Varilite Icon Back Support systems. Varilock enables quick and easy insertion and removal of the shell from multiple angles, promoting ease of use. It features an ergonomic push button release slide cap that can be opened and closed easily, and locks into place when pushed closed. The orange safety colour on the inside of the holster of the slide cap provides a visual indication when the slide cap is in an open position, thus promoting safety. The angle tolerances in the Varilock have been decreased by 50 %, thus reducing the amount of play in the back system.

Ease of Adjustment

Icons and their mounting hardware allow for angle, width, height, and depth adjustment. The angle adjustment is +/- 20 degrees. Icons can be installed on wheelchairs that are 2cm wider or narrower than the back support. The lateral width adjustment is 5cm in total. Icon Back Supports provide a degree of height adjustment by simply loosening the shell brackets and sliding the shell into position. The depth position of the back support can be adjusted 3cm by moving the holster along the upright of the Varilock bracket.

Varilite Accessories

Users who need extra support for correcting posture can utilise our PSIS block or Supplemental Lateral Support which can be attached to the shell of the Varilite back support and its lateral supports.

PSIS Block (04249)

Provides support to the sacrum at the PSIS level, promoting neutral pelvic tilt and spinal extension.

Supplemental Lateral Support (04266)

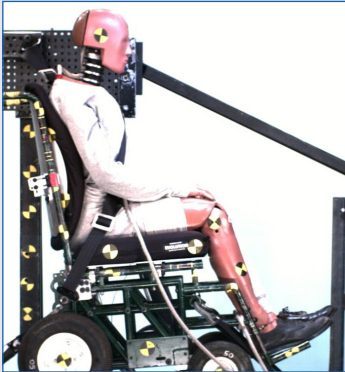
Provides additional support where desired. It helps users with lateral tendencies to maintain an upright position.

Resistance to Flammability

Flammability tests were performed on the Icon cushions and covers by an independent laboratory according to the requirements of ISO 7176-16 (1997) standard for resistance to ignition of wheelchair upholstered parts. This standard specifies methods of testing to assess the resistance of the cover and cushion to ignition by cigarette or match, and states requirements that progressive smouldering and flaming resistance shall not occur.

Crashworthiness

Varilite supports industry safety initiatives. The Icon Tall and Deep Back Supports have been dynamically tested for safe use in motor vehicles by an independent transport centre. The Icons conform to ISO16840-4 (for more information please visit www.varilite.com to download the RideSafe brochure).



Varilite Talon Back Support

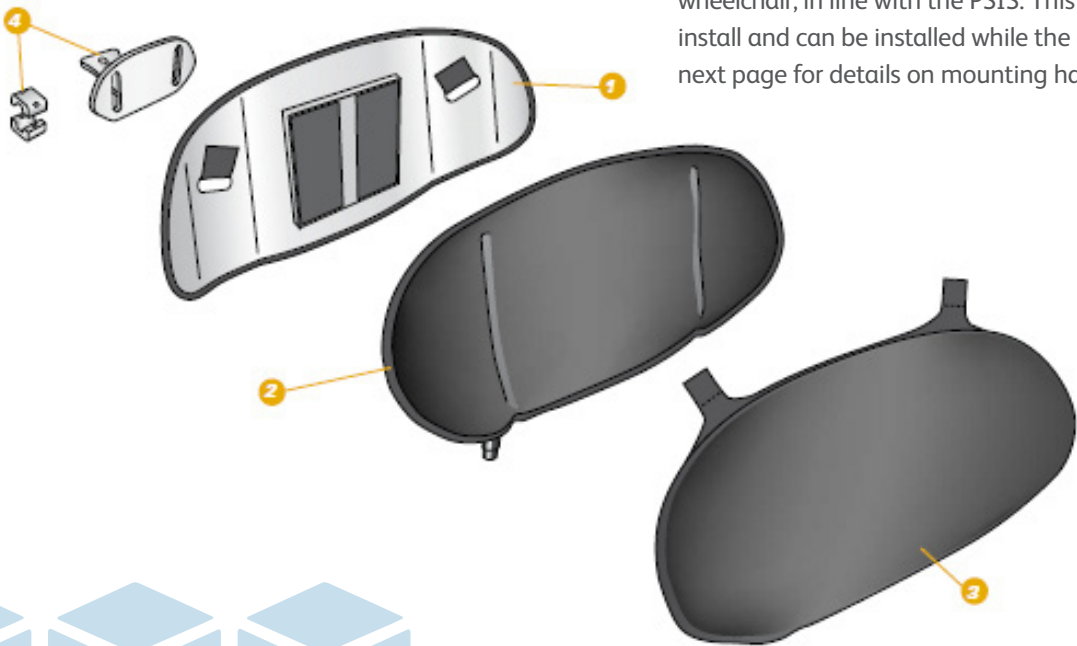
The Talon is a lower trunk support which positions clients properly by supporting the PSISs, and, because it's ultralightweight, it reduces fatigue and joint strain for those who propel manually. Plus, the Talon's low-profile design and contemporary finish complement modern rigid wheelchair designs. Designed to mount on a rigidiser bar of a rigid wheelchair.



Anatomy of a Talon

- 1. Shell:** The Talon has a lightweight aluminium shell which provides support to soft-tissue areas. The Talon is oval-shaped for maximum support at the PSIS, and is tapered and contoured at the ends for lateral support. It has a low profile design allowing upper body freedom of movement.
- 2. Cushion:** The Talon is manufactured with Varilite's air-foam technology. The foam is bonded to a puncture resistant material, while the two-way-stretch fabric makes the cushion hold air. The valve lets air in and out of the cushion for an individual fit. The cushion foam is thicker at the centre for vertebral support, and tapered at the sides to accommodate soft tissue during reaching activities.

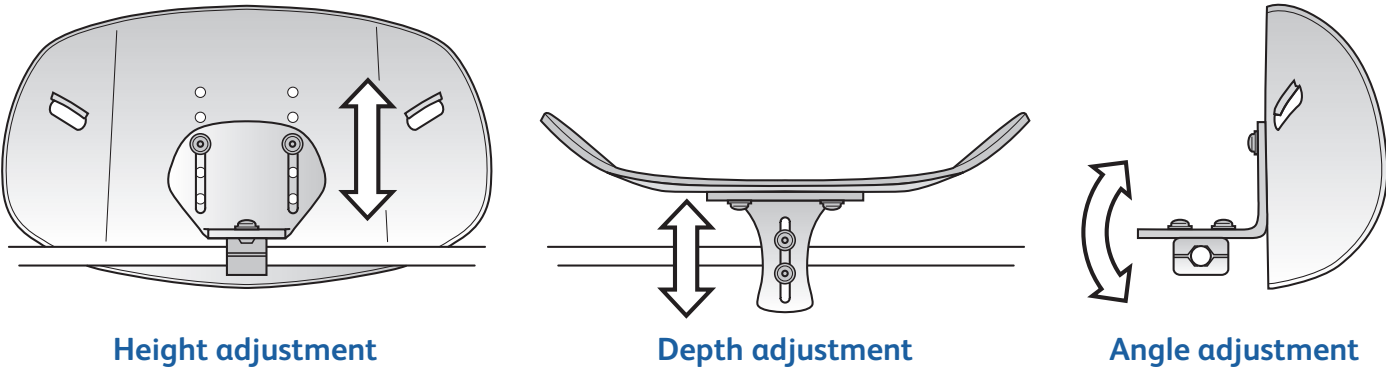
- 3. Cover:** The wrap-around cover provides maximum padding and protection. Two-way-stretch mesh fabric helps wick moisture and vapour away from the body. Pass-through attachment flaps and a large loop panel on the back of the cover attach securely to hook strips on the shell. The reticulated foam inside the cover promotes air and water vapour exchange, and improves pressure distribution. The Talon cover meets the ISO 7176-16 ignition resistance standard for upholstered wheelchair components, and is machine washable.
- 4. Mounting Hardware:** The Talon hardware permits adjustment in 3 directions: height, depth, and angle adjustment. The hardware attaches to a rigidiser bar of a rigid wheelchair, in line with the PSIS. This hardware is easy to install and can be installed while the client is in the chair. (see next page for details on mounting hardware adjustments)



Talon™						
Width	14" (35 cm)	15" (38 cm)	16" (40 cm)	17" (43 cm)	18" (45 cm)	20" (50 cm)
Order Code	47517	47519	47521	47523	47525	47527
Length	6.1" (15.5 cm)	6.6" (16.8 cm)	7" (17.8 cm)	7.4" (18.8 cm)	7.9" (20.1 cm)	8.7" (22.1 cm)

Varilite Talon Back Support

The Talon attaches to a wheelchair's rigidiser bar. Its mounting bracket provides adjustment in three directions, height, depth, and angle, and is available in three depths to permit a range of posterior and anterior positioning. For most users, the Talon is positioned with the shell in line with the back of the chair canes. The guide below shows the recommended mounting bracket based on rigidiser bar depth, as well as the range of posterior and anterior adjustment possible with each bracket.



Talon™ Mounting Bracket Selection Guide						
Rigidiser Depth*	1.75" (4.4cm)	2.00" (5cm)	2.25" (5.7cm)	2.50" (6.3cm)	2.75" (7cm)	3.00" (7.6cm)
Recommended Bracket (Short)						
Posterior Adjustment†	0.25" (0.6cm)	0.50" (1.3cm)	0.75" (1.9cm)	1.00" (2.5cm)	1.25" (3.2cm)	1.50" (3.8cm)
Anterior Adjustment†	0.25" (0.6cm)	N/A	N/A	N/A	N/A	N/A
Recommended Bracket (Medium)						
Posterior Adjustment†	N/A	N/A	0.25" (0.6cm)	0.50" (1.3cm)	0.75" (1.9cm)	1.00" (2.5cm)
Anterior Adjustment†	0.75" (1.9cm)	0.50" (1.3cm)	0.25" (0.6cm)	N/A	N/A	N/A
Recommended Bracket (Long)						
Posterior Adjustment†	N/A	N/A	N/A	N/A	0.25" (0.6cm)	0.50" (1.3cm)
Anterior Adjustment†	1.25" (3.2cm)	1.00" (2.5cm)	0.75" (1.9cm)	0.50" (1.3cm)	0.25" (0.6cm)	N/A

Notes: *As measured from the back of the upright canes to the front of the rigidiser bar. †Refers to the range of adjustment possible from the back of the upright canes.

Talon™ Mounting Bracket			
Size	Short	Medium	Long
Order Code	47532	47533	47534



Tarta - More Than Just a Back Support



Tarta - More Than Just a Back Support, Tarta is a Secure Hug

The Tarta back was designed by an orthopaedic technician with 20 years of experience within the field. This back is a well thought design having a unique combination of a back rest and a back support, with an advanced level of adaptability and customisation, making it one of its kind in the market for back supports.



This premium designed, ergonomic back acts as an exoskeleton, separately supporting each vertebra of the mid-lower back depending on client needs. The Tarta back support is created in such a way that it wraps your back into a secure hug and supports the ribs and the spine in every place where you would use your hands for support. The padded cushioning of the back not only supports the trunk, but also acts as a comfortable rest, thus giving it qualities of a back rest and a back support.

Made of high quality aluminium metal, the back is durable and aesthetically designed with avant-garde material used within the padding, giving it a sturdy yet elegant look. The clever properties of the harmonic memory metal within the core of the back system, is designed to smartly remember the main settings of the back, which means even if the settings are changed due to dis-formation or movement of the client, the back will click into the original settings, thus making it exclusive to individual.

The Tarta back system is available in 4 sizes, small, medium, large and extra large, with the height support options of 4, 5 and 6 vertebrae depending on the need.

The back system is available not only in a Standard padded shape model with slightly curved slats, for comfort, but also in a Contoured padded shaped model for extra support acting as an embracing hug to the individual.

The pads attached to the ribs also known as slats of the back come with adjustable with Velcro attachments.

The Tarta back system is easily adjustable with maximum adaptability. Every vertebra allows for 10 degree inward and outward inclination, giving the back capabilities of being adapted to different degrees of scoliosis and lordosis.

The ribs are made of durable and adjustable aluminium that can be curved a few millimetres for the perfect fit.

The upper parts of the Tarta back allow for more flexible natural movements of the body whilst being able to control posture.



10 degree inward and outward inclination capabilities to cater to Scoliosis and Lordosis

Tarta - More Than Just a Back Support, Tarta is a Secure Hug

What makes the Tarta back system so different?

- The Tarta back system has the option of using different shaped and sized ribs to fit different shaped backs.
- The upper parts of the back are more flexible and allow for natural movement of the body, while the lower parts when fixed give excellent lumbar support.
- Every rib and vertebra is padded with premium quality material that makes the back not only comfortable but breathable allowing circulation of air through every rib.



Taking into consideration, the functionality of the back and capabilities of being highly customisable, the Tarta back only weighs from 895 gms to 1830 gms.

The Tarta back can be fitted onto most wheelchair types, such as a canvas back, power wheelchair, manual wheelchair etc. The back can be mounted on a wheelchair either by a single point mount/connector attached to the rigidiser bar of the wheelchair or through a two point mounting system.

The Tarta back can be customised to individual needs by using only some ribs where support is needed.

Since the ribs are made of aluminium, they can be curved at millimetre levels for a perfect fit.



Standard Tarta Back Support

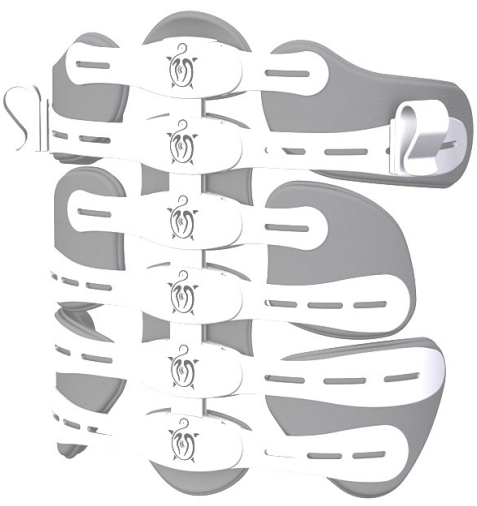


Customised Tarta Back Support



Contoured Tarta Back Support

Ordering an Off-the-shelf Tarta Back Support System



Step 1: Select your Tarta Back Size

Small	Medium	Large	Extra Large
Code: S	Code: M	Code: L	Code: XL

Step 2: Select Length of Tarta Back/ Number of Vertebrae

4 Vertebrae	5 Vertebrae	6 Vertebrae
Code: 4	Code: 5	Code: 6

Step 3: Select your Tarta back type

Standard	Contoured
Code: S	Code: A

Your Complete Code: is a combination of one choice from each step

Step: 1 - 2 - 3

Example :

M4S

Example: M4S Medium 4 Vertebrae Standard

Selecting your Customised Tarta Back Support System

A Tarta back support system can be custom-made for individuals needing extra or specific support with higher degrees of complexity. While customising the back it is important to keep the client’s needs in mind. The customised back is available in 4, 5 and 6 central vertebrae options.

Once the central system is selected, selecting combinations from the range of ribs is the next step. It is important to note that number of ribs needed, depends on the selection of the central vertebral system. 8 ribs are required for the 4 vertabrae formation, 10 ribs for the 5 vertebrae system, and 12 for the 6 vertebrae system.

The ribs can be easily screwed onto the vertebral system which also allows a degree of upward and downward rib adjustment to cater to support needs.

Lastly to complete the custom system, it is important to choose the right pads. The central pads attach to the central vertebral system, while the upper, middle and lower lateral pads attach to the sides of the back, to give it the shape of a hug, supporting the torso.

It is essential to determine the mounting hardware for this system, depending on the client’s wheelchair. A single point mounting system is available for wheelchairs that already come with a horizontal rigidiser bar. This single point mount then attaches the back to the rigidiser bar. For chairs that do not have a horizontal bar such as canvas back chairs, a two point mounting option is available. This attaches to the canes of the wheelchair, The highly customisable Tarta back is simple to build and a comfortable hug for your torso.



A dynamic back support to replace wheelchair backs and canvasses

DYNA SPINE™

Dynaspine - A Dynamic Back



A dynamic back to replace wheelchair back canvasses

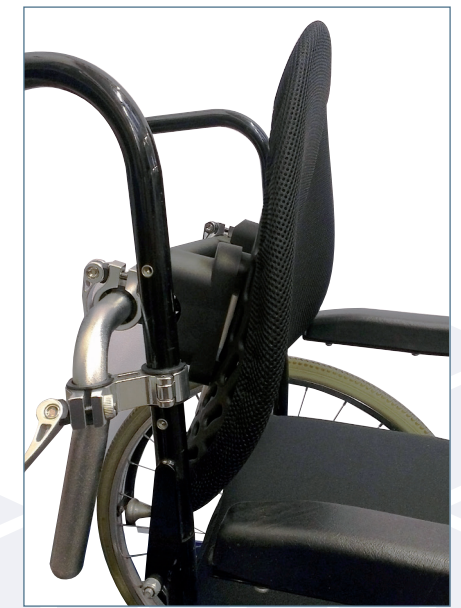
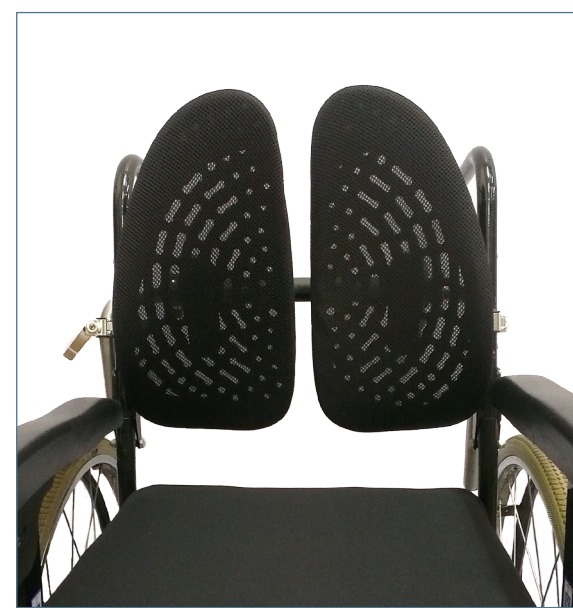
Poor posture can lead to backache and other back problems. Good posture means that the spine is aligned correctly and supports the head. Physiological functions such as breathing, digestion, and blood circulation, are enhanced by good trunk posture.

Back pain may occur in any region of the back, from the base of the skull to the hips, and is usually a symptom of stress or damage to ligaments, muscles, nerves, discs or other supporting structures to the spine. It is critical that as well as providing your back with static support, a back support should encourage you to move. Static canvas back supports hold the spine in one position, do not allow for easy adjustability, nor dynamic movement, which can lead to back pain.

Does your back support:

- Help reduce back pain?
- Allow for dynamic movement?
- Improve posture?
- Provide better seating?

Sitting is an activity. Very few people stay in the same seated position for long. A seating system that encourages and enables dynamic movement balanced with suitable support is the ideal - the ideal provided by **Dynaspine**.



Dynaspine - A Dynamic Back

What is Dynaspine?

Dynaspine is a revolutionary back support technology with a unique design. The flexible ergonomic design supports dynamic activity and function, and is the first of its kind that allows for dynamic movement of the spine. It has two flexible back support plates, specially designed to mould and adjust to your position whilst seated, ensuring correct posture is maintained and your back is always supported. The dynaspine is particularly helpful for users who have nerve pain and tension in the spine and shoulders, which is normally aggravated by continuous sitting.

What makes the Dynaspine Unique?

Dynaspine has a unique design with two back plates which contour to the the back and support the spine. The back is designed to move and allow for dynamic activity while being seated. The central vent and other small vents within the back support promote air flow. Its unique design is aesthetically pleasing and discreet.

- ✓ Dynamic
- ✓ Promotes Air Flow
- ✓ Reduces Back Pain

Features and Benefits

Ergonomic design

Conforms to the contours of your spine for ideal fit

Height-adjustable

Allows for correct fitting for all shapes and sizes

Flexible design

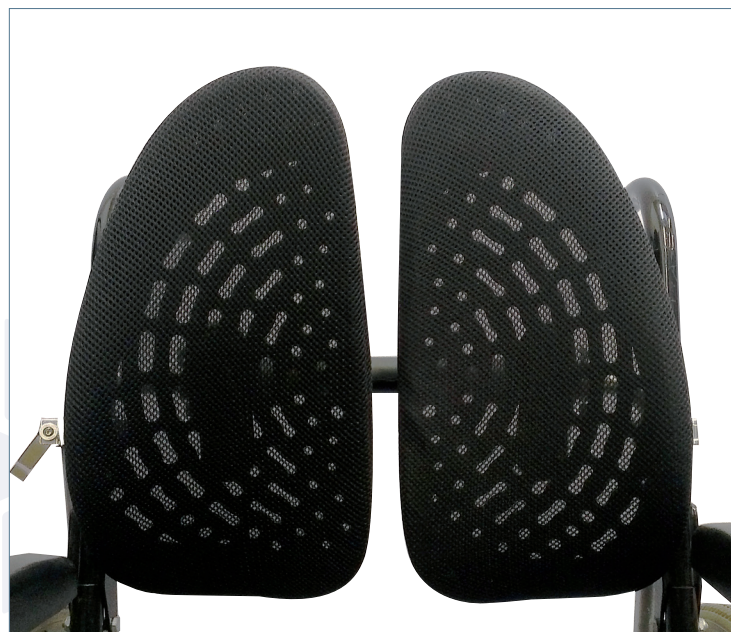
Allows movement while still offering optimal support

Central vent

Promotes optimal airflow

Dynaspine is easy to:

- ✓ Assemble
- ✓ Use
- ✓ Take with you



Product Code
DSWCA
fits chair widths
16" to 19"

What Should The Back of a Seating System provide?



The back of a seating system is arguably the most important part of the seating system, but often receives the least attention. Maybe this is because for too long we have referred to it as a back rest. In most cases it's a back support. Back supports need to accommodate a lot of individual variables. First, we need to understand what these variables are and what the needs are. Only then can we discuss how back supports can accommodate specific issues. This involves an assessment, and this is often not done.

With the back section of a seat we are looking, on the one hand, to provide support, but, on the other, allow freedom for function and activity of the user. We are

trying to defy the distortional pulls of gravity while allowing freedom of movement. The 3-dimensional flexibility at each vertebra needs to be managed, while also using the back to help control the 3-dimensional flexibilities of the head, shoulder girdle, and pelvis.

Each of these aspects can present prescriptive conflicts and dilemmas. What is best for the end-user cannot always be achieved, and frequently there is a need to find a compromise. Before that point is reached, all the possibilities for producing the perfect solution should be explored.

This abstract was taken from the HIA 'Postural Challenges and Seating Solutions' article. If you would like a copy of the full article please contact sales@hiaus.net.au



Postural Challenges and Seating Solutions

Dr Barend ter Haar

Other Product Ranges by HIA

HIA Cushions - A Better Way to Sit



At HIA, we pride ourselves on being able to offer cushions that excel in many areas. Our cushions are designed to cope with the user's every need. Cushions without compromise.

The HIA Cushions Catalogue brings you our full range of premium and innovative seating solutions.

BodiTrak Pressure Mapping System



Boditrak are at the forefront of pressure mapping technology. The BodiTrak mat has in-built electronics, with just a simple cable to plug the mat into a USB port of a PC, Laptop or Tablet. This makes BodiTrak the most portable and ready to use pressure mapping system. Order our brochure to find out more.

Shear Comfort Foot Care and Skin Care



HIA Ltd presents a range of footwear and skin care products made from Merino-Cross wool, for advanced pressure-relief, microclimate control and superior comfort, for clients at risk of developing pressure ulcers. The Shear Comfort™ brochures bring together all product codes for this range of wool products.

Terms and Conditions

Customer Service

Healthcare Innovations Australia
T: 1300 499 282 F: 08 8125 5990
Intl T: +61 8 8359 0804 F: +61 8 8125 5990

Claims

All claims for non-receipt are to be made within seven days of invoice date.

Terms

Please note that all prices are quoted exclusive of:

- Carriage
- GST
- Consultancy charges
- Fitting charges

Prices are subject to change without notice.

Returns

Please contact Healthcare Innovations Australia within 30 days of the purchase date for a return

authorization number. All stock returns are subject to a \$35 restocking fee, plus GST and applicable freight charges.

Overdue Invoices

Overdue invoices may incur an interest charge of 3 % per month.

Warranties

All Varilite products carry a 2 year warranty against manufacturers defects excluding covers which carry 1 year warranty.

Limitations on Warranties

The warranties described herein do not extend to products that have been subject to misuse, accident, or tampering, nor to products that have been modified in any way other than that specifically described in the product instructions.

The foregoing warranties are in lieu of all other warranties expressed or implied, including

without limitation, implied warranties of merchantability and fitness for a particular purpose. In no event shall HIA Ltd be liable for any special, indirect, incidental or consequential losses or damages resulting from the use of the product, including without limitation, loss of anticipated profits, even if HIA Ltd have been advised of the possibility of such potential loss or damage. HIA Ltd shall not be liable for any loss or damage caused by delay in furnishing product.

HIA Ltd does not authorize any distributor, dealer, agent, sales person or any third party to change the terms or coverage of this warranty, and any such change shall be null and void. This warranty is non-transferable.

This warranty information is reprinted here for information purposes only and is subject to change without notice.